

# MELKWEG

HOUSE RIDER & SPECS 2025/26

## EXPO



Lijnbaansgracht 234A  
1017 PH **AMSTERDAM**  
[www.melkweg.nl](http://www.melkweg.nl)

Melkweg Expo:  
Marnixstraat 409  
(Entrance via MILK cafe)  
1017 PJ **AMSTERDAM**

### Contents

Contact Details	1
About Melkweg & Melkweg Expo	1
Parking & General Expo Info	2
Technical Specifications	3
Gallery Diagrams	4

## ADDRESS & CONTACT DETAILS

Gallery Marnixstraat 409, 1017 PJ, Amsterdam  
Load-in Lijnbaansgracht 234A, 1017 PH, Amsterdam  
Phone +31 20 531 81 81  
Email [info@melkweg.nl](mailto:info@melkweg.nl)  
Advancing [expo@melkweg.nl](mailto:expo@melkweg.nl)  
Website [www.melkweg.nl](http://www.melkweg.nl)

## INTERNET

WiFi SSID: Melkweg Event  
WiFi password: AccessGranted  
Wired: 1Gb download  
Wired: 1Gb upload

The Production Manager (PM) of Melkweg expo is reachable via [expo@melkweg.nl](mailto:expo@melkweg.nl).  
Alternatively, the full production team can be contacted via [productie@melkweg.nl](mailto:productie@melkweg.nl).

## ABOUT MELKWEG

The only surviving factory building within the Amsterdam canal ring, Melkweg is a former sugar factory, turned milk (melk) factory. This historical building houses three concert halls, a cinema, a multidisciplinary room, and an exhibition space. With a reach beyond our venue, Melkweg events can also be found at external locations across the city of Amsterdam.

## ABOUT MELKWEG EXPO

Melkweg Expo is a non-commercial gallery dedicated to showcasing various photography talent. In the Melkweg, established names can be seen alongside new talent and emerging styles get the chance to reach a broader audience. The diversity of its programming and visitors, together with its different spaces and special location, have for years made the Melkweg a unique place. We are very happy to be welcoming your participation in an exhibition at Melkweg Expo!

## EXPO OPENING HOURS

Tuesday – Sunday / 11:00 – 23:00  
Gallery space closed on Monday.

## SETTLEMENT

For questions relating to the settlement, please speak to your expo contact.

Invoices can be addressed to the following, with a digital copy sent to the programmer and [factuur@melkweg.nl](mailto:factuur@melkweg.nl).

Stichting Melkweg  
Lijnbaansgracht 234a  
1017PH Amsterdam  
The Netherlands

KVK/COC: 41200472  
BTW/VAT: NL0029559835B01  
IBAN/ACCOUNT: NL33RABO0111698065  
BIC: RABONL2U

## MELKWEG – HOUSE RIDER & SPECS: EXPO – 2024/25

Lijnbaansgracht 234A 1017 PH AMSTERDAM [www.melkweg.nl](http://www.melkweg.nl) +31 20 531 81 81

## **PARKING**

Parking availability is extremely limited; all vehicles must be confirmed in advance with our production department, no private cars allowed. Access to Melkweg parking on the Lijnbaansgracht may be blocked by a traffic pole. To have this lowered, ask our reception for assistance.

For an efficient load in/out, adhere strictly to the parking map provided by the production manager, and ensure you do not block any doorways or bridges as these are fire exits. A load in/out permit can be collected from the reception desk and displayed in the front windscreen. Please return this before leaving the Melkweg.

*Parking at this venue is managed by the local government and is frequently checked. Non-compliance is enforced with fines. Follow the instructions above closely as Melkweg will not be liable for any potential parking fines.*

## **LOAD IN/OUT**

Street level, a flat push of less than 100m. Via Melkweg's main entrance, located on the Lijnbaansgracht.

## **GENERAL INSTALLATION INFORMATION**

The build-up period starts 4-8 days before the opening, depending on the complexity of the installation and the number of participating artists. The staff of Melkweg Expo will clearly communicate the dates with you. You are encouraged to take an active approach when it comes to installing your own work. Only upon prior arrangement will Melkweg provide a small technical team to assist with the build and break.

Important to note, there is NO storage available at the venue.

## **GALLERY SPACE LIMITATIONS**

All walls and pillars are constructed from multiplex wood and plaster, therefore pre-drilling (or the use of plugs) is not necessary.

The ceiling is made from a soundproofing material, hanging items from the ceiling is not possible. There is a grid in place but heavy items cannot be hung from it.

The floor is wooden and highly susceptible to damage, please proceed with extreme caution when working in this space. It is prohibited to drill or attach objects to floor.

Any damages are the responsibility of the artists.

## **HEALTH AND SAFETY**

At Melkweg, the safety and well-being of our staff, artists, and guests are our top priority. We kindly request your cooperation in maintaining a healthy environment by using the necessary Personal Protective Equipment (PPE), especially steel-capped shoes, while working in our venue.

We uphold a zero-tolerance policy towards harassment at Melkweg. Our commitment is to foster a safe and inclusive environment for our staff, artists, and audience members. Any form of bullying, harassment, or discrimination will not be tolerated under any circumstances.

We take appropriate measures against COVID-19, complying with the latest local rules and regulations, and maintaining our ventilation systems in optimal condition.

We are a smoke free venue – Fines apply.

# **EXPO TECHNICAL SPECS**

## **AUDIO (ON PRIOR REQUEST ONLY): INSTALLATIONS**

If the artwork involves audio this must be discussed well in advance. Majority of equipment used for this will need to be ordered in via a supplier.

## **AUDIO (ON PRIOR REQUEST ONLY): INSTALLATIONS**

Mains	2x JBL CBT-70 (passive tops)
Subs	1x JBL PRX 715 XLF (active sub)
Amps	Crown XTI 2002 (stereo amp)
Controls	Soundcraft Ui16 (Apple iPad)

Microphones	Extensive list available on prior request
Wireless microphones	UR4D+ dual channel receiver with 2x UR2/SM58 handheld transmitters
DJ gear	Pioneer XDJ-XZ
Important	We are restricted to a maximum sound level of 65 dB(A) Leq 15 min.

## **VIDEO & LED SCREENS (ON PRIOR REQUEST ONLY)**

Projector	Panasonic PT-RCQ10BEJ 1DLP Laser projector – 10.000 AnsiLumen
Video screens	2x Philips 55BDL3010Q -54.6" with various stands

More information and a full equipment list can be found in the complete video specs of Melkweg.  
Please ask the PM for this document.

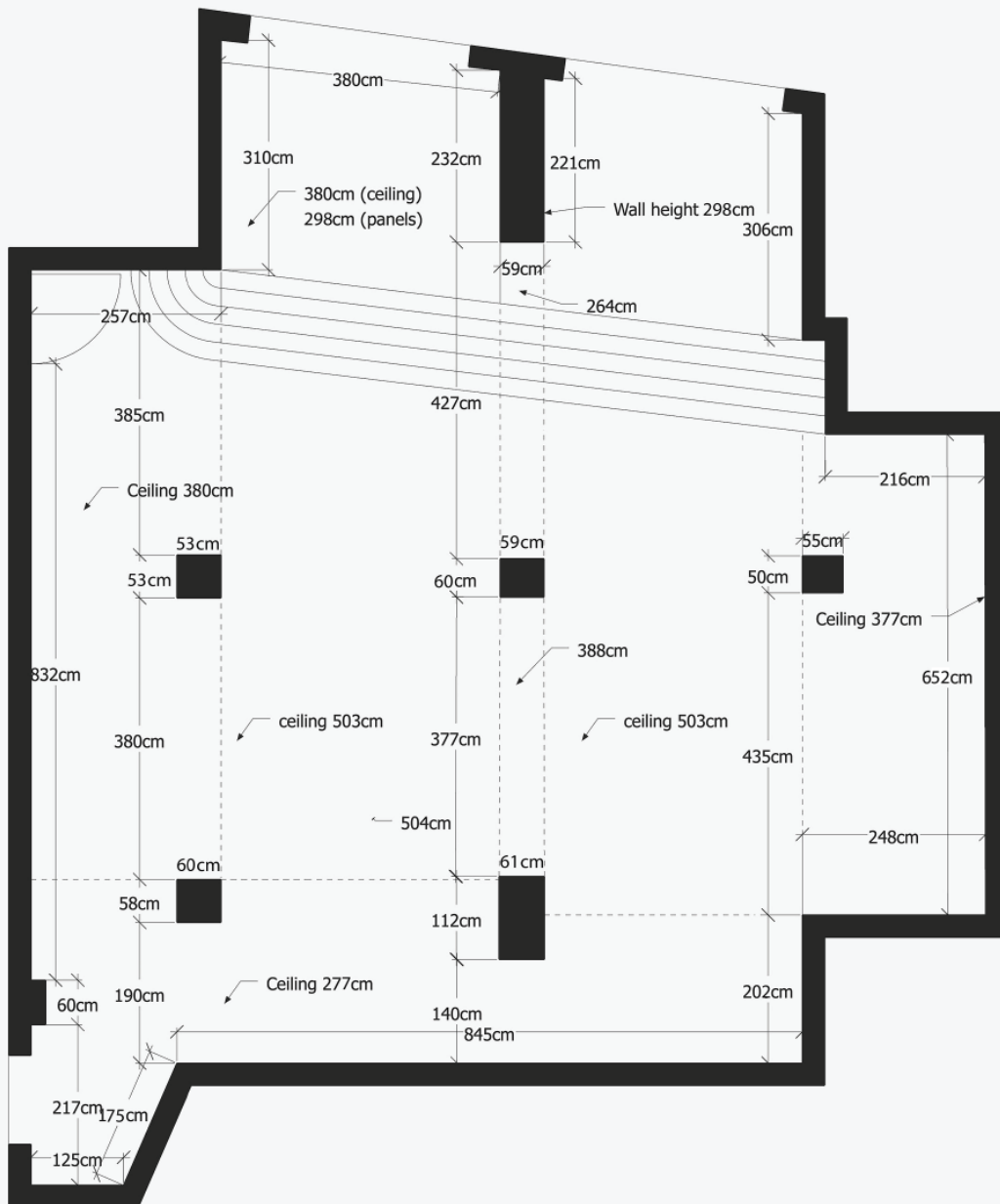
## **LIGHT**

Fixed grid with movable and dimmable spots - ERCO Pollux 10W All lights on one switch.

## **POWER**

Standard European power of 230V can be found throughout the space.  
There is also the option to connect to 1x 16A CEE 3PH - CEE-form, 3 phase + neutral + ground.

## EXPO DIAGRAM



## MELKWEG – HOUSE RIDER & SPECS: EXPO – 2024/25

Lijnbaansgracht 234A 1017 PH AMSTERDAM [www.melkweg.nl](http://www.melkweg.nl) +31 20 531 81 81