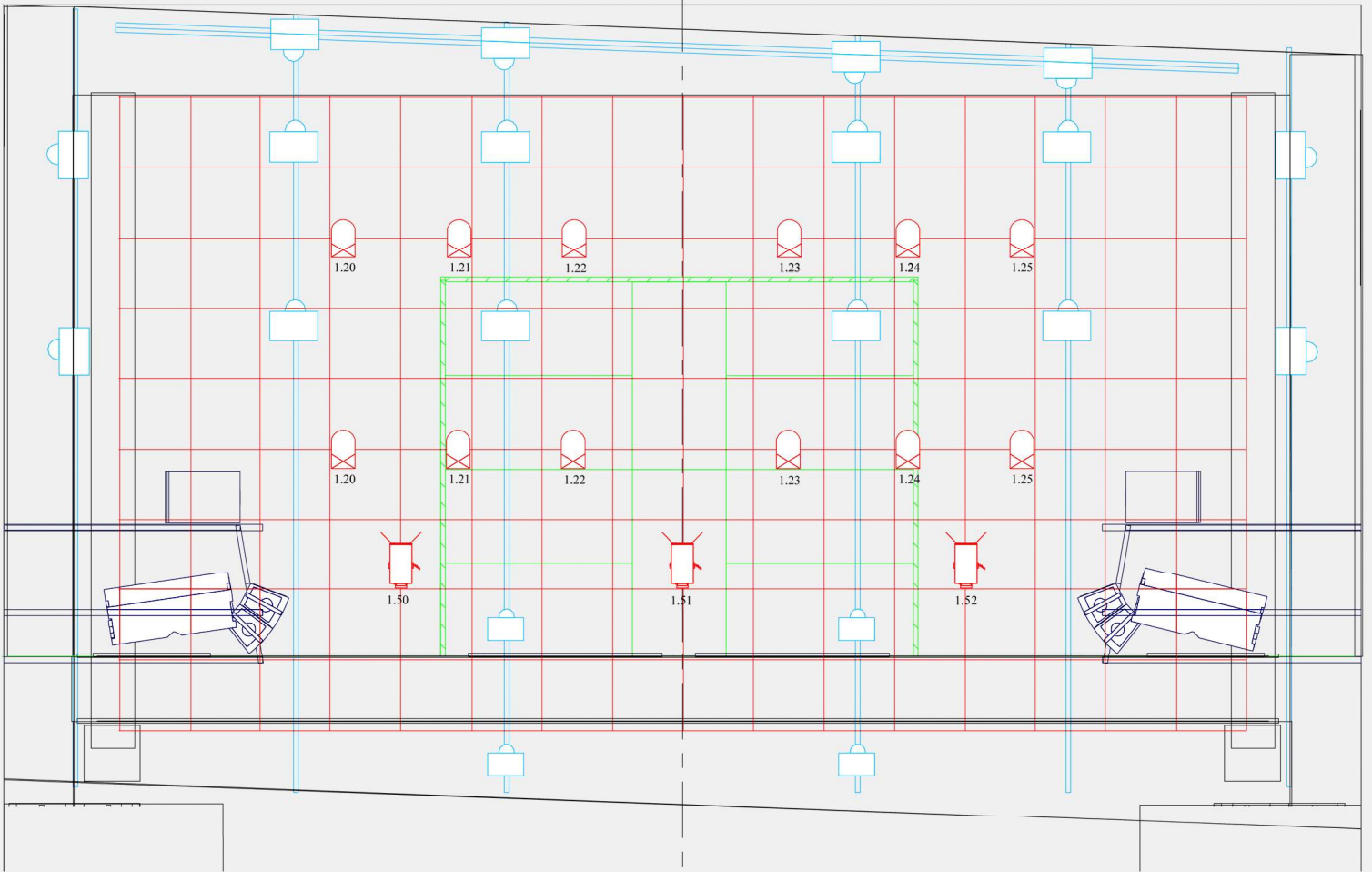
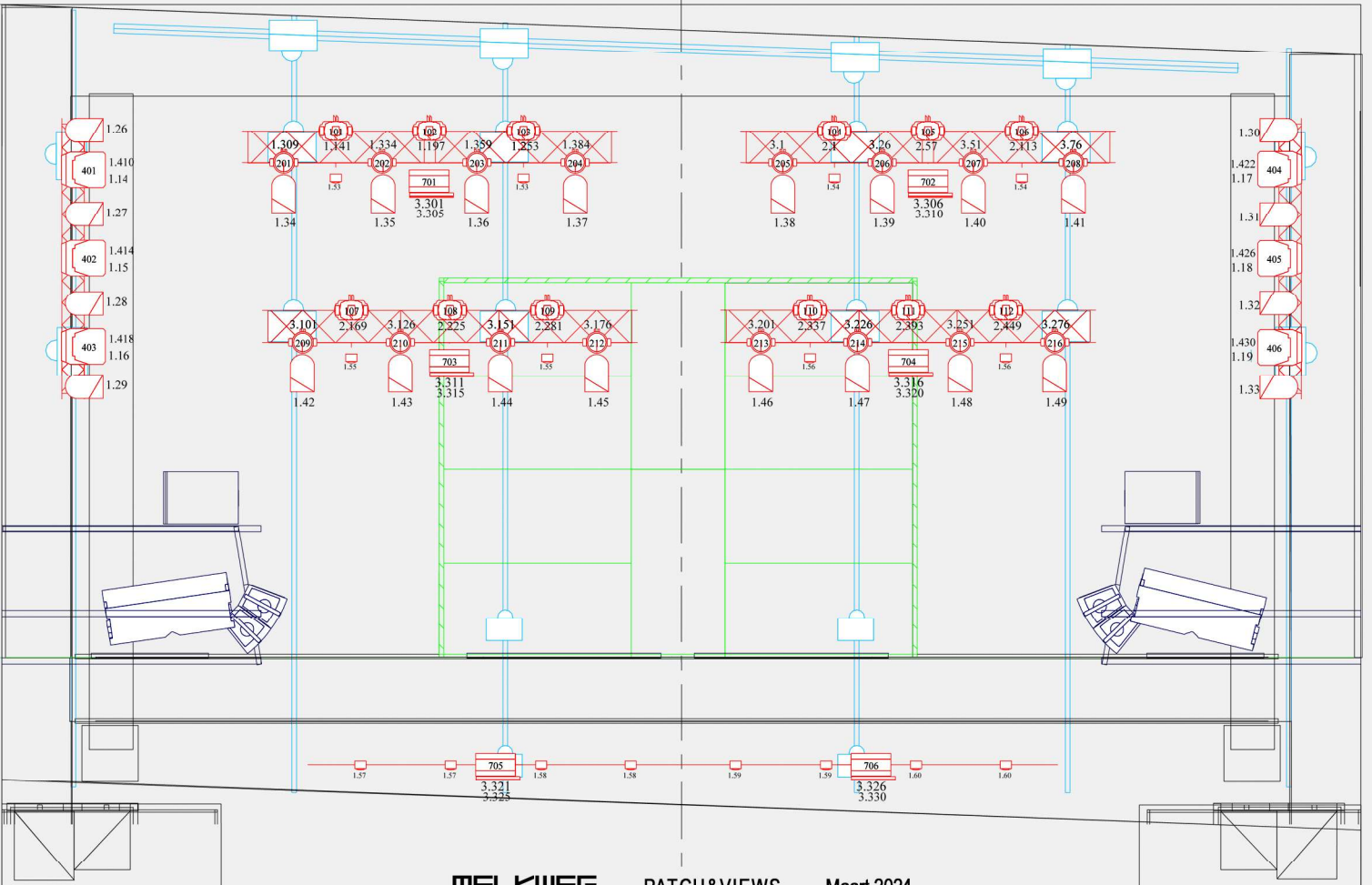


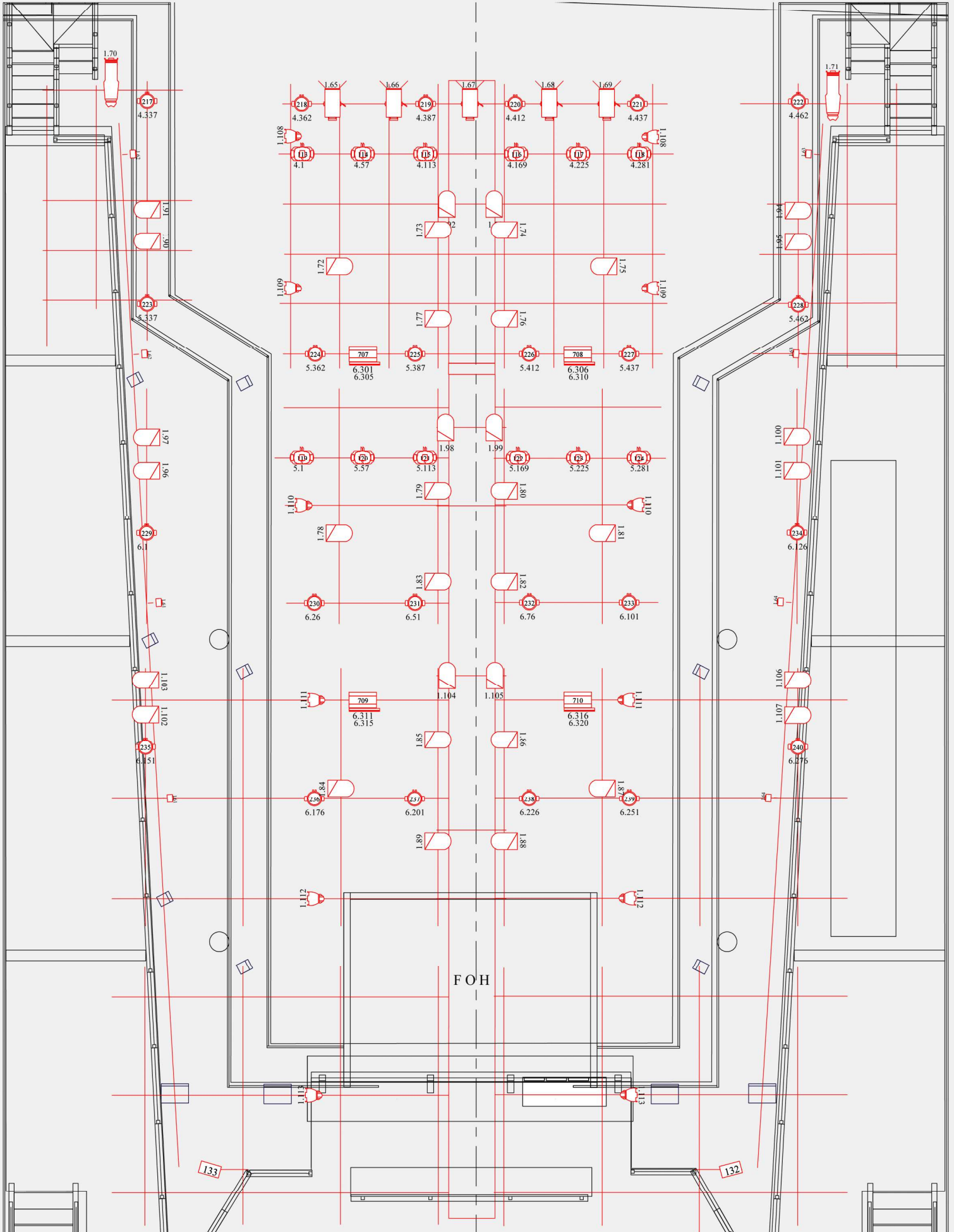
# THE MAX stage roof



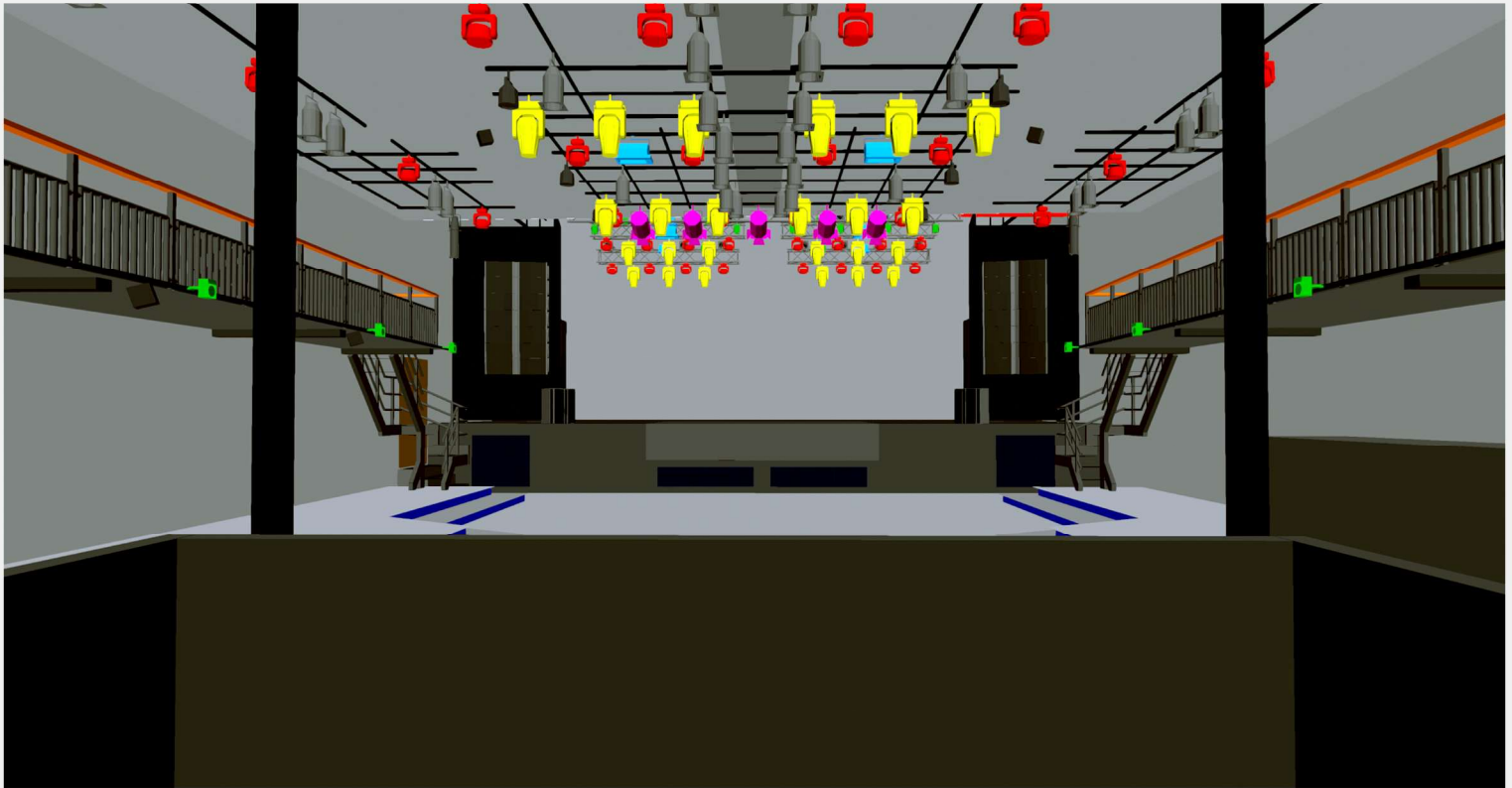
# THE MAX stage truss



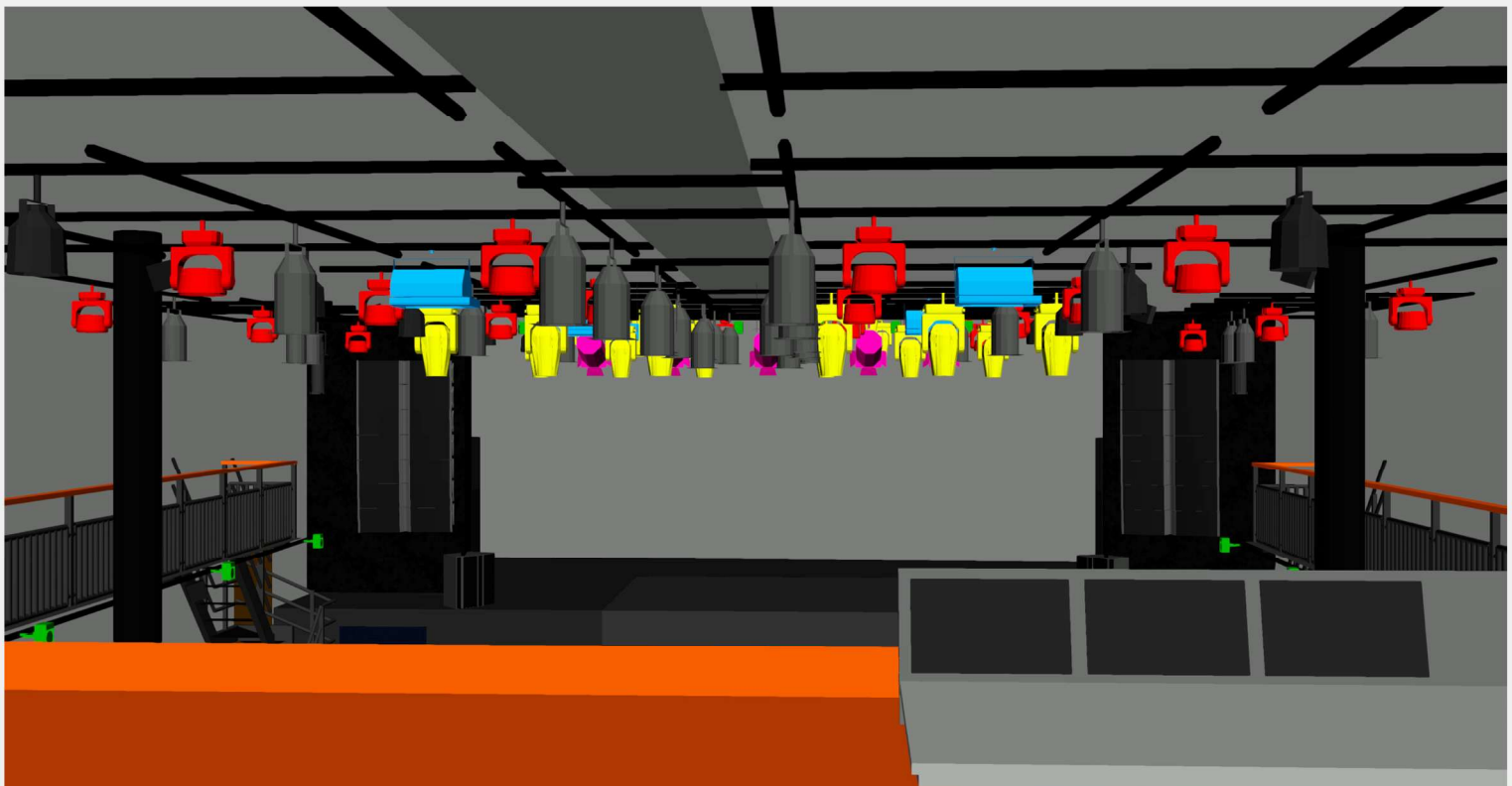
# THE MAX hall plot



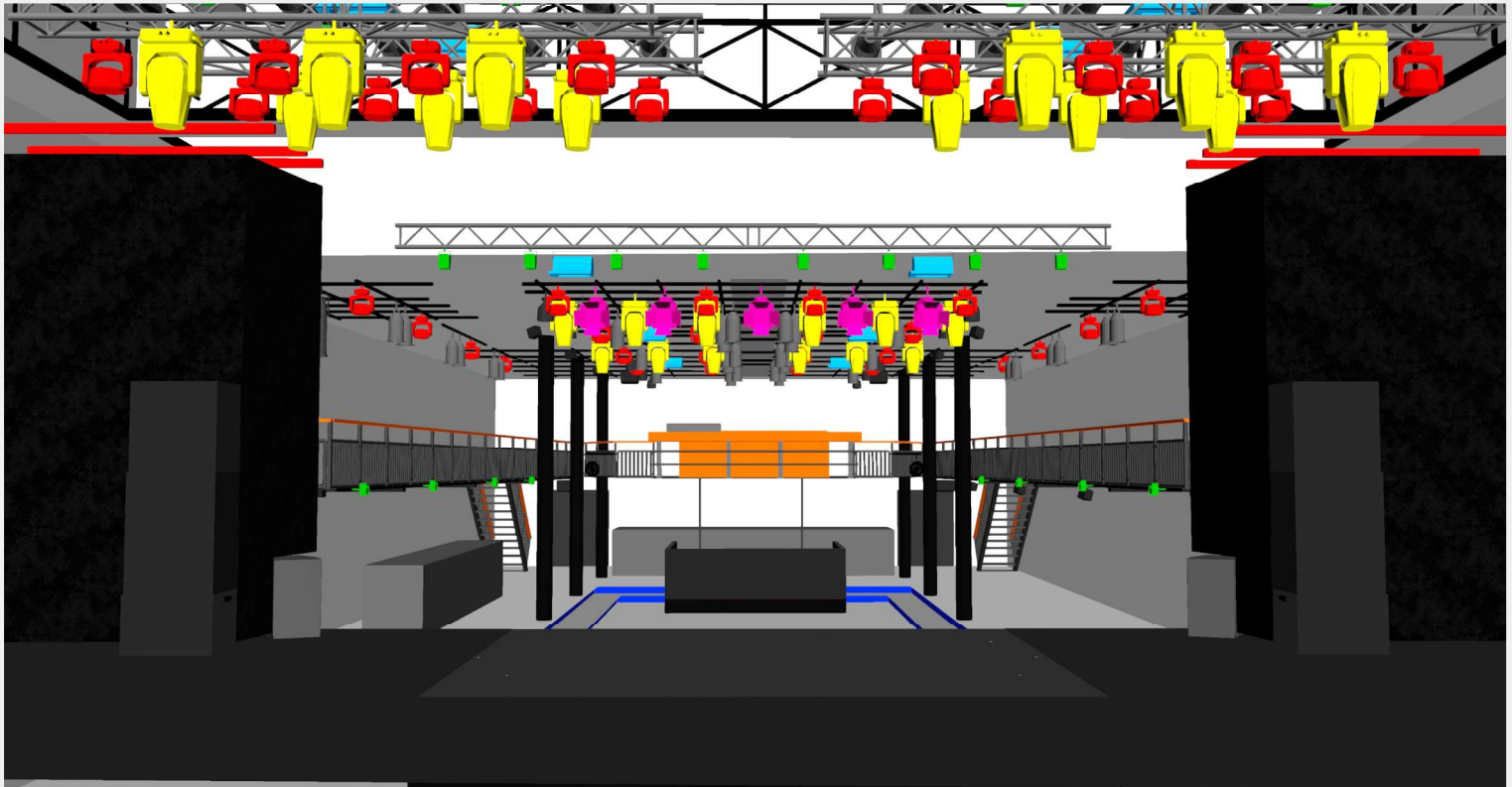
THE MAX view f.o.h.



THE MAX view balcony LD



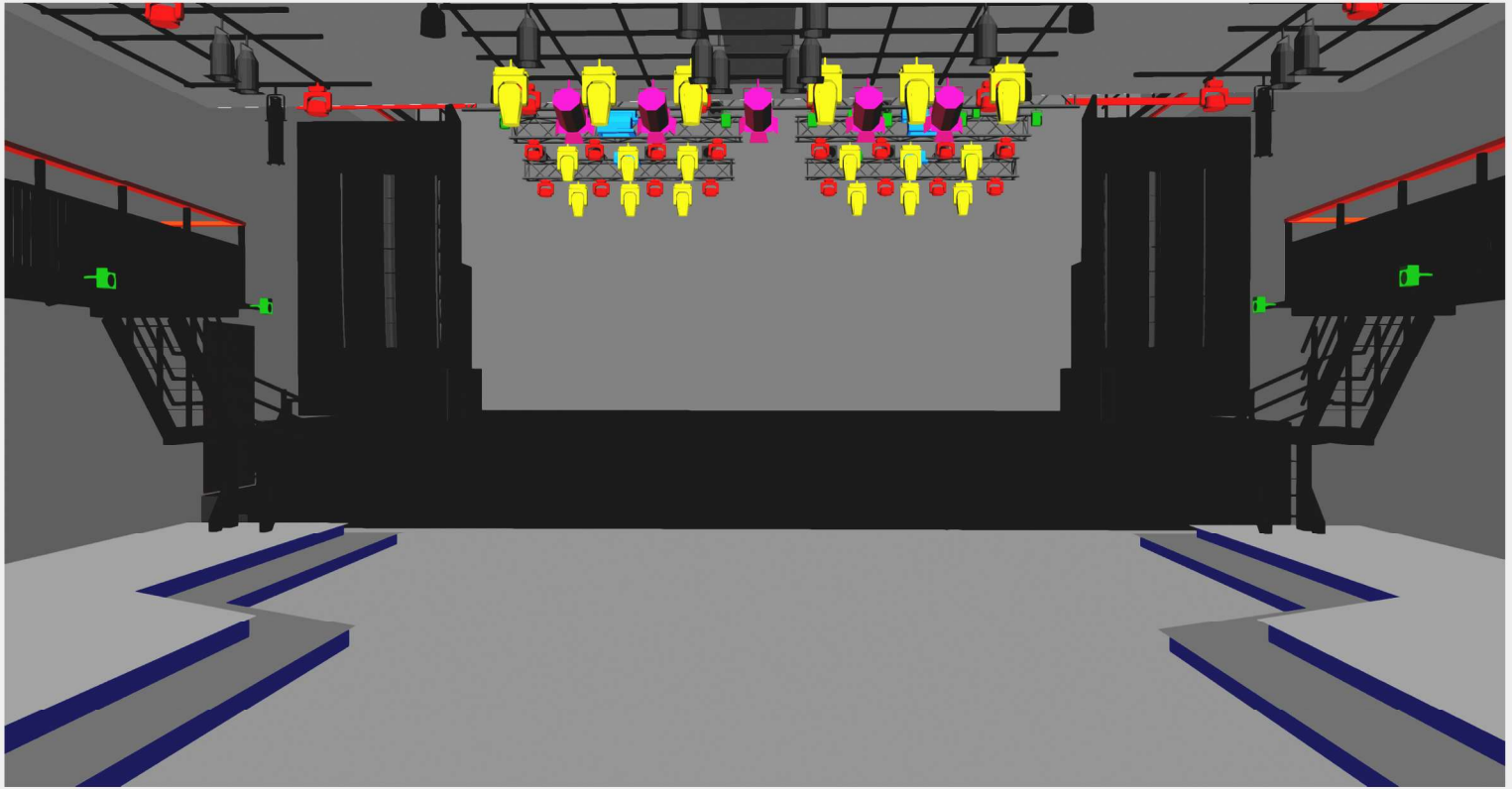
THE MAX view from stage



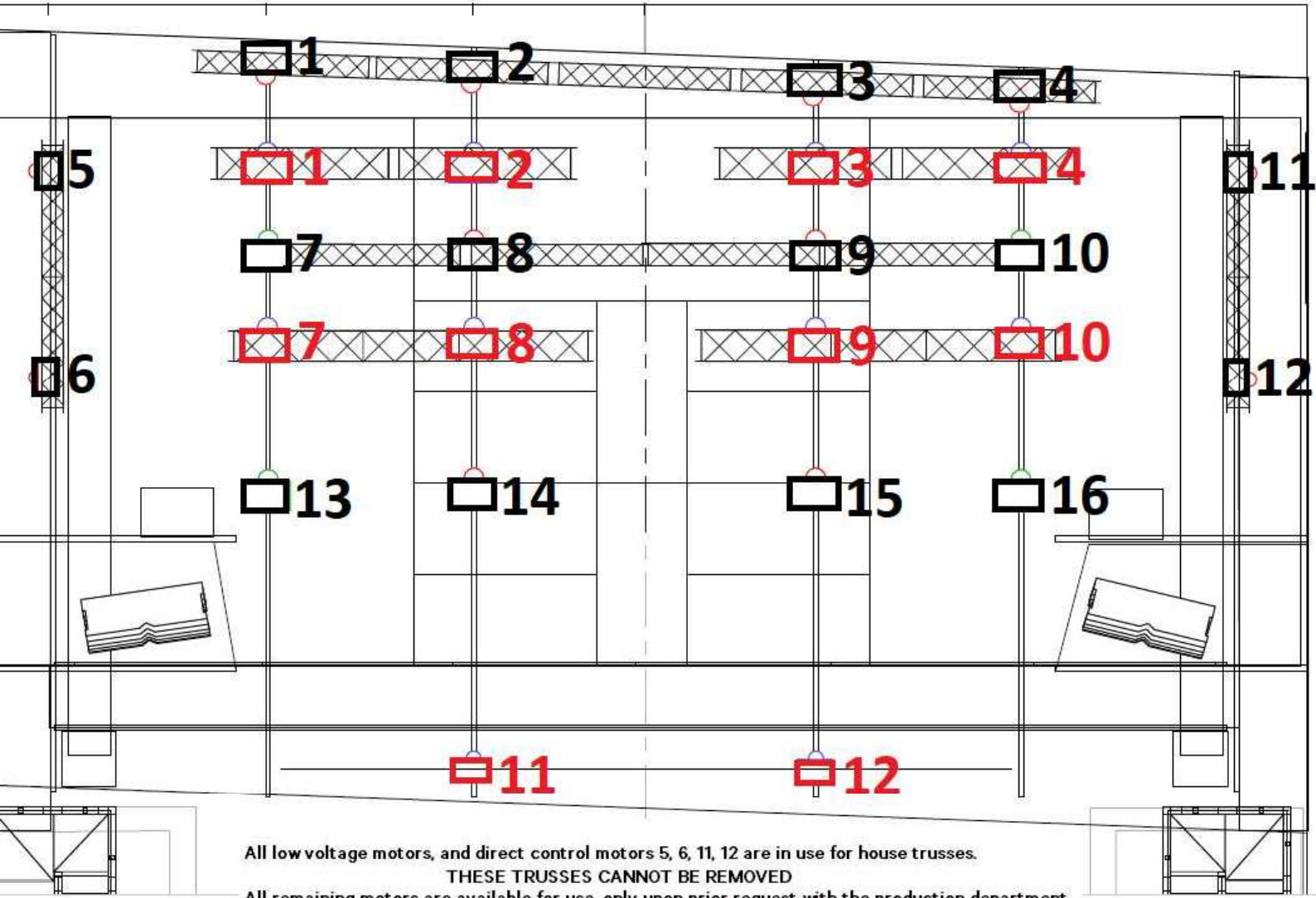
THE MAX view side



MELKWEG  
THE MAX hall



MELKWEG MAX



All low voltage motors, and direct control motors 5, 6, 11, 12 are in use for house trusses.

THESE TRUSSES CANNOT BE REMOVED

All remaining motors are available for use, only upon prior request with the production department

**DIRECT CONTROL / LOW VOLTAGE**